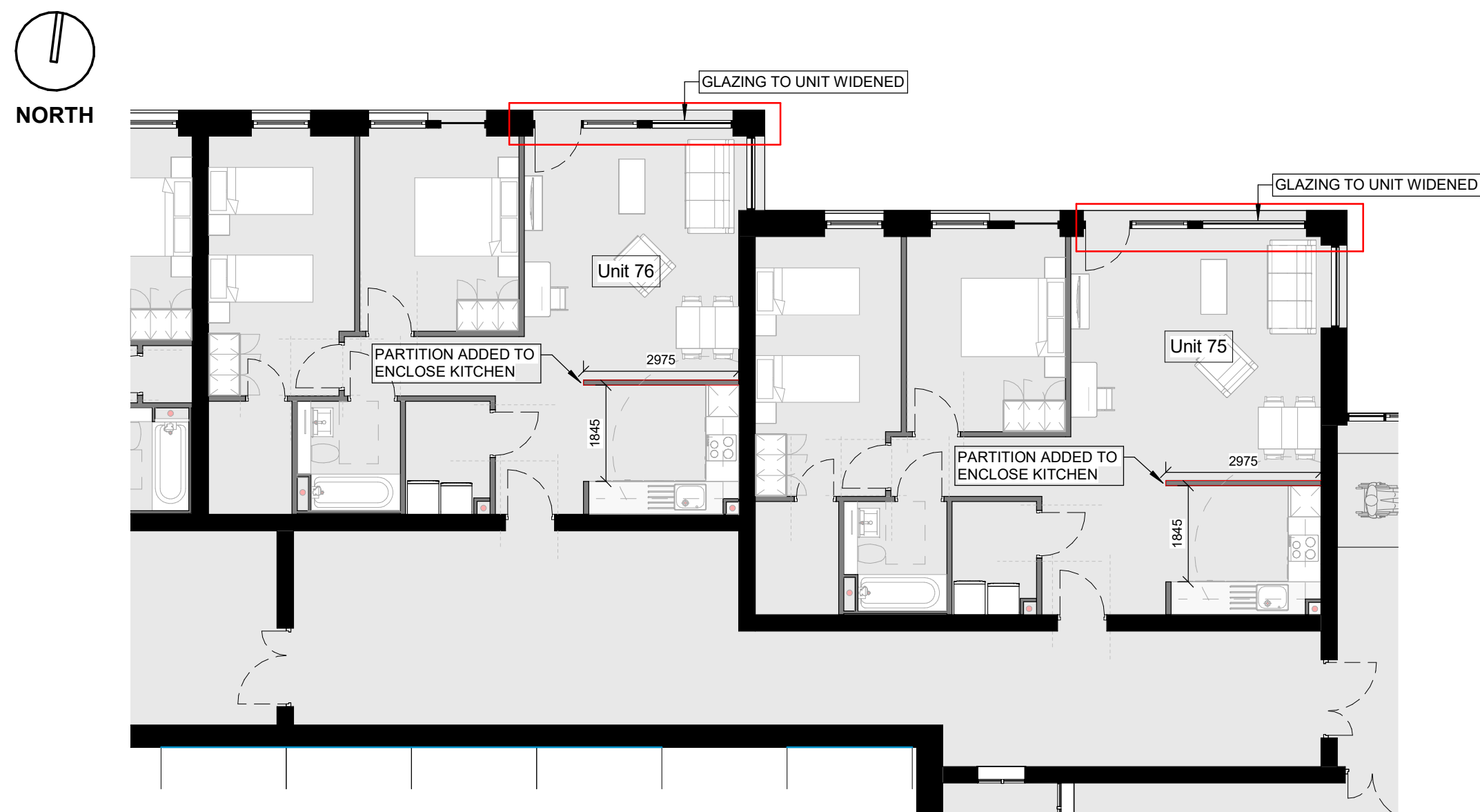


Middle Block - North Elevation - RFI Response  
1 : 100



Middle Block - Partial Floor Plan - RFI Response  
1 : 100

**Notes:**

- Do not scale from this drawing. Use figured dimensions in all cases.
- Verify dimensions on site and report any discrepancies to the Architect immediately.
- This drawing to be read in conjunction with the Architect's Specification.
- © This drawing is copyright and may only be reproduced with the Architect's permission.

**Drawing Notes:**

UNITS / GLAZING MODIFIED AS PART OF RFI REPONSE OUTLINED IN RED

Issues & Revisions			
Rev.	Date	Dwn	Details of Issue / Revision
P3	14.07.2025	AK	ISSUED FOR RFI RESPONSE



Douglas Business Centre,  
Carrigaline Rd.,  
Douglas, Cork,  
T12 P0B8  
T: + 353 (0)21 436 2922  
W: www.reddyarchitecture.com  
E: info@reddyarchitecture.com

Client Details:  
**The Land Development Agency (LDA)**

Project Details:  
**LDA Wilton, Sarsfield Road LRD  
Lands Adjoining the ESB Networks DAC Office, at  
Farrandahadore More, Sarsfield Road, Wilton  
Cork City**

Drawing Title:  
**Middle Block RFI Response**

Job No.	Sheet Size:	Scale @A1:	Status	Purpose of Issue
<b>P23-081C</b>	<b>A1_</b>	<b>1 : 100</b>	<b>P3</b>	<b>RFI RESPONSE</b>
Issue Date:	Drawn By:	Reviewed By:	Project - System - Spatial Zone - Level - Type - Originator - Role - Number	
<b>JULY 2025</b>	<b>A. Keniry</b>	<b>P. Mulligan</b>	<b>WLT-06-MB-XX-DR-RAU-AR-1701</b>	<b>P3</b>